


Leasing Information

Leasing Information	Small One Bedroom			
\$525 / Mo.	One Bedroom			
\$550 / Mo.	Large One Bedroom			
\$550 / Mo.	Two Bedroom			
\$750 / Mo.	Three Bedroom			
\$1110 / Mo.				
Apply Now	Apply Now	Apply Now	Apply Now	Apply Now
Deposit	\$200*	\$200*	\$200*	\$200*

Pet Fee	\$30 / Mo.	\$30 / Mo.	\$30 / Mo.
---------	------------	------------	------------

Water, Sewer, Trash and  at



Apartment Amenities
First Floor Apartment



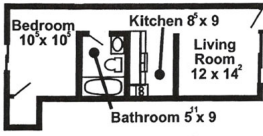
Second Floor Apartment



Private Entrances

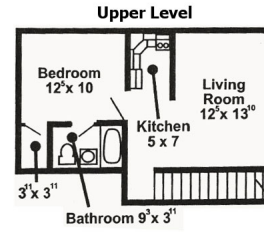


Spacious Floor Plans {ppgallery}



{/ppgallery}

{ppgallery}



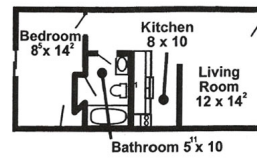
Upper Level



Lower Level

{/ppgallery}

{ppgallery}



{/ppgallery}

{ppgallery}

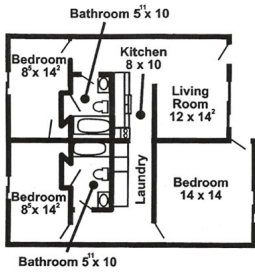


Phase 3

{/ppgallery}

{ppgallery}





{/ppgallery}

Cable Ready



Spacious Closets



Ample Kitchen Cabinets



Deadbolt Locks



Smoke Detectors



Stove & Refrigerator ✓



Tanning ✓



Dog Park ✓



Security ✓



Included Utilities
Prompt Maintenance ✓




24 Hr Emergency Assistance ✓




Lawn Care & Snow Rem 




Water, Sewer, Trash and  at



Community Amenities
Directly Across from HCC 




Close to Crossroads Mal 



Off-Street Parking 



Sand Volleyball Court 





Basketball Court



Student Life Activities



Professional Staff



Pet Friendly



Close to Lost Island Watermark



Close to the Isle Casino





Wide Screen Theater

